

Report approved May 18, 1893

PROVIDENCE, R. I.  
CITY ENGINEER'S OFFICE  
STREET LINE DEPT.

Aug. 2, 1890

016735

Providence, R. I.  
This plat accompanies  
our report of this date.

# PLAT OF CANAL STREET

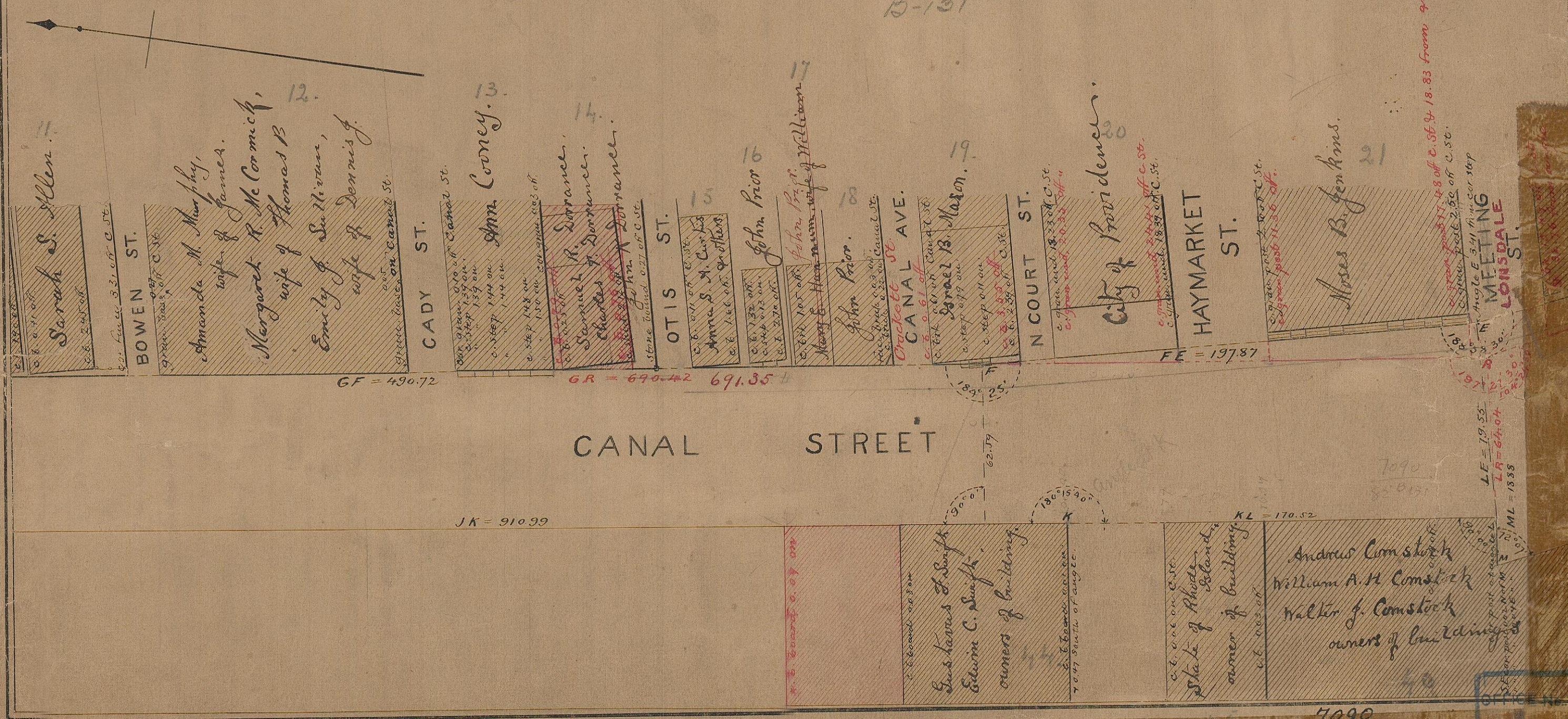
FROM SMITH ST. TO MARKET SQUARE

IN FOUR SHEETS

SCALE 40 FEET PER INCH.

7090  
82  
B-131

Notes in red ink show changes  
made in November 1892,  
Adopted May 18, 1893.



GF = 490.72

GR = 690.42 691.35

FE = 197.87

JK = 910.99

KL = 170.52

LE = 19.55  
LR = 64.04  
ML = 18.88

7090  
82  
B-131

OFFICE NO.  
DRAWER  
SHEET

7090  
82  
131